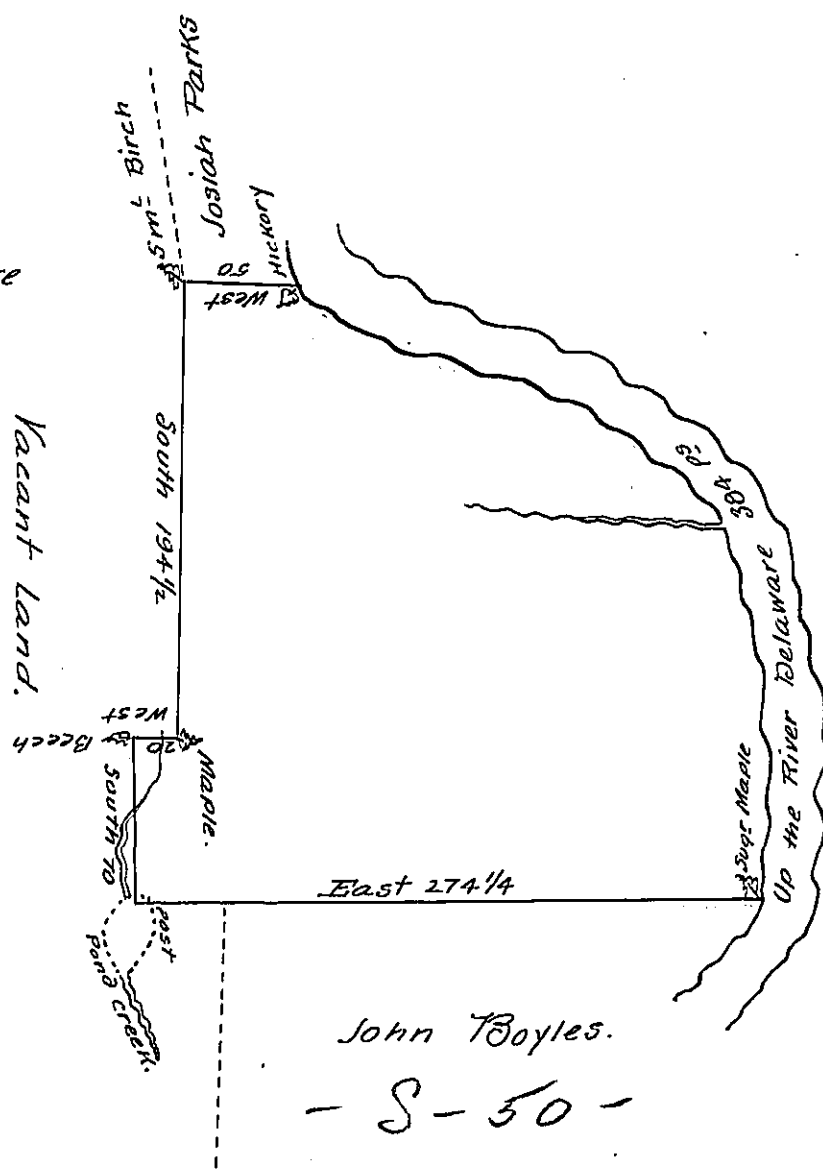


FORM No. 1.

Bearing & Distances
up Delaware River are

N.	5°	E.	55
N.	10	W.	100
N.	40	W.	38
N.	60	W.	36
N.	68	W.	138
N.	20	W.	9.

C 5-6-87



John Boyles.

- S-50 -

By Virtue of a warrant Dated the 17th Day of March 1774. Surveyed the
 2^d Day of October 1775 to Bartle Shee the above Described tract of Land sit-
 -uate on the Westerly side of the River Delaware above Equinunk creek & a
 little below a place known by the name of Topolite in Northampton County
 containing Three hundred & forty Acres ninety perches and the allowance of
 Six P. Cent &c.

To Geo. Palmer, P. S.

To John Lukens, Esq.

Surveyor General.

IN TESTIMONY that the above is a copy of the original remaining on file in
 the Department of Internal Affairs of Pennsylvania, made
 conformably to an Act of Assembly approved the 16th day of
 February 1833, I have hereunto set my hand and caused
 the Seal of said Department to be affixed at Harrisburg,
 this twentieth day of February 1907.

Isaac D. Brown
 Secretary of Internal Affairs.